



PEST PROS

BY GLANCY ENVIRO



PEST CONTROL SPECIALISTS
WWW.PESTPROS.IE



At Pest Pros, a division of Glancy Enviro, with over two decades of expertise in ensuring homes and businesses across Ireland remain pest-free. Catering to diverse sectors, from residential communities to pharmaceutical companies, our dedicated team combines environmentally-friendly approaches with cutting-edge technology to tackle pest challenges. Our growth is rooted in strong client relationships and understanding individual needs, offering tailored solutions. Committed to innovation, we continuously update our methods, ensuring you receive the most advanced solutions. Choose Pest Pros for unparalleled quality, reliability, and peace of mind.

51 Bracken Road, Sandyford, Dublin 18.
info@pestpros.ie • +353 1 691 7028
www.pestpros.ie

TABLE OF CONTENTS

About	04
Our services	05
Mice	06
Rats	07
Cockroaches	08
Bead bugs	09
Ants	10
Silverfish	11
Moths	12
Carpetbeetles	13
Wasps	14
Flies	15
Birds	16
Woodworm	17
Mites	18
Wildlife Management	19
Legislation and Auditing	20

Who We Are

At Pest Pros, we are committed to keeping your homes and businesses free from unwanted pests, ensuring safety and peace of mind for all. As part of Glancy Enviro, a leader in environmental services across Ireland, we stand on a foundation of two decades of unmatched expertise and a solid reputation.

Our Expertise

Our portfolio includes a broad spectrum of clients, encompassing sectors such as public services, residential communities, manufacturing plants, pharmaceutical companies, and construction sites. We are more than just a service provider; we are a committed partner that ensures quality and reliability in every project.

Our Team

Our strength lies in our people. Equipped with the finest training and driven by a passion for excellence, our team integrates environmentally-friendly methods and the latest technology to combat pest-related challenges. We're proud of the benchmark standards we've set and continuously strive to exceed them.

Customer Satisfaction

The cornerstone of our growth has been the solid relationships we've built with our clients. We pride ourselves on understanding the unique needs of each customer and offering tailored solutions that effectively address your specific pest control challenges.

Innovating for the Future

In a rapidly evolving field like pest control, staying ahead of the curve is crucial. We are committed to innovation, constantly updating our methods and technologies to offer you the most advanced and effective solutions available.

Your Trust, Our Commitment

Choosing Pest Pros means investing in peace of mind. Backed by decades of industry experience and expertise, we are fully committed to delivering a service that not only meets but exceeds your expectations.

Our services:

Rodents

- ✧ Rats (e.g., brown rats,)
- ✧ Mice

Insects

- ✧ Cockroaches (e.g., German cockroach)
- ✧ Bed bugs
- ✧ Fleas
- ✧ Ants
- ✧ Silverfish
- ✧ Moths (e.g., clothes moths)
- ✧ Carpet beetles
- ✧ Wasps
- ✧ Flies

Birds

- ✧ Pigeons, Seagulls,

Wood-boring insects

- ✧ Woodworm

Mites

- ✧ Bird mites
- ✧ Dust mites

Wildlife management

- ✧ Badgers, Foxes

Mice

Mice can cause distressing and expensive problems, especially for businesses. These small rodents can gnaw through insulation, pipes, and even electrical wiring, posing fire risks.

Commercial & Residential Risks:

- Property damage, including insulation, pipes, doors, and floorboards
- Contamination of food and potential disease transmission
- Electrical fire risks due to chewing through wiring
- Noise, odors, and droppings affecting living conditions

• **Detection & Treatment:**

- Look for signs such as droppings, gnaw marks, and nesting materials
- Use of traps, bait stations, and professional extermination services

• **Prevention Tips:**

- Install bristle strips on the bottoms of doors
- Seal holes with stainless steel wire wool and caulking
- Cover air bricks and vents with fine wire mesh
- Address roofing issues and use wire mesh to seal gaps
- Trim tree branches and avoid plants growing up building sides



Rats

Rats pose similar, yet often more serious problems compared to mice. They are notorious for finding ways into buildings through even the tiniest openings and can transmit dangerous diseases like Leptospirosis.

- **Commercial & Residential Risks:**
 - Spread of diseases including Leptospirosis
 - Electrical fire risks due to chewing on wires
 - Property damage and contamination of food and sterile areas
 - Health and safety risks, especially for food-handling businesses
- **Detection & Treatment:**
 - Signs of a rat infestation include droppings, damaged items, and scratching noises
 - Utilize traps and professional extermination services
- **Prevention Tips:**
 - Store food in metal or glass containers with tight lids
 - Reduce clutter in and around premises
 - Use metal bins with securely fitted lids for rubbish
 - Store pet food in robust, sealed containers
 - Keep gardens clean and avoid composting organic food waste
 - Repair damage to structures and use wire mesh to seal gaps



Cockroaches



Cockroaches are resilient pests that flourish in environments that provide warmth, water, and food. Once established, an infestation can spread rapidly, affecting not only your property but also neighboring ones. The implications for businesses, especially those in the food and healthcare industries, are severe and can include regulatory penalties and reputational damage.

- **Commercial & Residential Risks:**

- Contamination of food and sterile areas, rendering them unsafe or unusable
- Spread of diseases and viruses such as Salmonella, Dysentery, and Gastro-enteritis
- Aggravation of health conditions like eczema and childhood asthma
- Significant damage to brand reputation and customer trust

- **Detection & Treatment:**

- Identification of common hiding spots and signs of cockroach activity
- Use of targeted insecticides, baits, and traps for effective eradication

- **Prevention Tips:**

- Store dry foods in tightly sealed containers to eliminate food sources
- Avoid leaving liquids in sinks or buckets
- Promptly clear all food and liquid spillages
- Rinse cans, bottles, and plastics before disposing of them
- De-clutter spaces by removing unused cardboard boxes and other items where roaches might hide
- Seal potential entry points, including gaps in walls, around utility pipes, and under doors

- **Time to Effectiveness:**

- Depending on the severity, full eradication may take several weeks to months

- **Ethical & Legal Compliance:**

- All treatments are conducted following health and safety guidelines to ensure the well-being of residents and pets

Bed Bugs

For businesses, particularly those in the hospitality sector offering accommodation, proactivity is crucial in managing bed bugs. These pests can quickly multiply and spread, posing a significant risk to your revenue, reputation, and even the operational status of your business due to potential health and hygiene violations.

- **Commercial & Residential Risks:**
 - Loss of revenue due to infestations affecting guest stays
 - Damage to business reputation, including poor reviews online
 - Possible fines or forced closure due to breaches in health and hygiene regulations
- **Detection & Treatment:**
 - Thorough inspections of bed frames, headboards, mattress seams, skirting boards, cupboards, and wardrobes
 - Targeted treatments using specialized insecticides
- **Prevention Tips:**
 - Ensure regular checks for signs of bed bugs like dark/black stains, an unpleasant sweet scent, and small dark spots known as 'faecal pellets'
 - Pest Pros can train your housekeeping staff to identify these signs
 - Inspect adjacent rooms to prevent the spread of bed bugs
- **Time to Effectiveness:**
 - Most treatments are effective within days, although repeat treatments may be required for severe infestations
- **Environmentally-Conscious Options:**
 - Eco-friendly treatment alternatives are available upon request



Ants

Ants are more than just a household nuisance; they can be a significant concern in commercial settings, particularly those that handle food or need to maintain sterile environments. From contamination to disease spread, the implications can be far-reaching, affecting both health and reputation.

- **Commercial Risks:**
 - Food and sterile area contamination
 - Disease spread: Salmonella, Dysentery & Gastroenteritis
 - Increase in eczema and childhood asthma cases
 - Reputation damage
- **Detection & Treatment:**
 - Comprehensive inspections
 - Targeted treatments including sprays and baits
- **Prevention Tips:**
 - Immediate cleanup of food and liquid spills
 - Use of airtight containers for food storage
 - No standing liquids in sinks or buckets
 - Proper disposal of cans, bottles, and plastics
 - Decluttering and sealing entry points
 - Enclosed compost and sealed rubbish bins
- **Time to Effectiveness:**
 - Most treatments yield results within days
- **Environmentally-Conscious Options:**
 - Eco-friendly treatments available on request



Silverfish

Silverfish are nocturnal, teardrop-shaped insects that thrive in damp, humid conditions like kitchens, laundry rooms, and bathrooms. Though they may seem harmless, they can cause significant problems, especially when they appear in large numbers. Their destructive feeding habits can damage important items and contribute to an unsettling living environment.

- **Commercial & Residential Risks:**
 - Feelings of being unclean and untidy
 - Damage to clothing, carpet, book bindings, paper, and photographs
 - Harm to reputation
- **Detection & Treatment:**
 - Comprehensive inspections
 - Targeted treatments including sprays and baits
- **Prevention Tips:**
 - Minimize dust and debris
 - Thorough vacuuming
 - Tightly sealed food storage containers
 - Use of dehumidifiers or fans to regulate humidity
 - Prompt repair of leaky pipes and improved ventilation
- **Time to Effectiveness:**
 - Most treatments yield results within days
- **Environmentally-Conscious Options:**
 - Eco-friendly treatments available on request



Moths

Moths can pose a unique set of challenges, particularly in settings where textiles and stored foods are abundant. While generally harmless to humans, certain species of moths can be detrimental to clothing, carpets, and pantry items. A moth infestation can lead to material damage and significant financial loss if not addressed promptly.

- **Commercial & Residential Risks:**
 - Damage to textiles like clothing, upholstery, and carpets
 - Contamination of stored foods in pantries
 - Degradation of valuable artifacts and documents
- **Detection & Treatment:**
 - Inspection of high-risk areas, including closets, pantries, and storage rooms
 - Targeted treatment using pheromone traps, sprays, and fumigants
- **Prevention Tips:**
 - Store clothing and textiles in airtight containers
 - Keep food items sealed in airtight containers
 - Regular vacuuming of carpets, drapes, and upholstery
 - Inspect incoming textile and food items for moth larvae or adult moths
- **Time to Effectiveness:**
 - Treatment typically yields results within weeks
- **Environmentally-Conscious Options:**
 - Eco-friendly treatments available upon request



Carpet Beetles

Carpet beetles are small, destructive pests that can cause significant damage to carpets, fabrics, and other household items. Often confused with bed bugs or other household insects, they are a particular concern for homeowners and businesses with high-quality textiles. Their presence can lead to irreversible damage to valuable goods and can tarnish the reputation of businesses, especially those in the hospitality industry.



- **Commercial & Residential Risks:**
 - Damage to carpets, upholstery, and other textiles
 - Contamination of stored food products
 - Loss of customer trust and business reputation
- **Detection & Treatment:**
 - Detailed inspection of suspected infestation areas like closets, rugs, and upholstered furniture
 - Application of specialized insecticides, traps, and preventive treatments
- **Prevention Tips:**
 - Regular vacuuming and steam cleaning of carpets and upholstery
 - Store vulnerable items like fur, wool, and silk in airtight containers
 - Inspect new textiles for signs of carpet beetles before bringing them into your space
 - Seal cracks and openings around windows, doors, and baseboards to prevent entry
- **Time to Effectiveness:**
 - Most treatments yield noticeable results within a few weeks
- **Environmentally-Conscious Options:**
 - Eco-friendly treatment alternatives are available upon request

Wasps

Wasps are highly active during the warm summer months in Ireland. While they play a role in natural ecosystems, they can become a considerable nuisance in commercial and residential settings. A wasp infestation can disrupt your business, pose a risk of painful stings, and even be life-threatening to those allergic to wasp venom.

- **Commercial & Residential Risks:**
 - Unwanted distraction for customers and employees
 - Business disruption
 - High risk of painful stings
 - Potential life-threatening reactions for people allergic to stings
 - Deter people from enjoying outdoor spaces
- **Detection & Treatment:**
 - Site inspection to identify nest locations
 - Safe, targeted removal or treatment of nests
- **Prevention Tips:**
 - Inspect premises in early spring for nests in lofts, garages, sheds, cavity walls, or under eaves
 - Keep outdoor bins sealed and away from entrances
 - Keep doors and windows closed to prevent wasp entry
 - Keep children and pets away from identified nest areas
- **Time to Effectiveness:**
 - Quick-acting treatments available
- **Environmentally-Conscious Options:**
 - Eco-friendly treatments available upon request



Flies



An unchecked fly problem can escalate into a full-blown infestation, posing serious health and regulatory risks, especially for businesses in the food and healthcare sectors. Flies not only are a nuisance but also carry diseases, bite people, and can even result in penalties for non-compliance with health and safety laws, thereby damaging a business's reputation.

- **Commercial & Residential Risks:**
 - Spread of diseases such as Salmonella and E. coli
 - Biting of staff and customers, causing physical discomfort and potential allergic reactions
 - Contamination of food and sterile areas, impacting product safety and quality
 - Reputational damage affecting customer trust and business growth
- **Detection & Treatment:**
 - Identify common breeding sites and signs of fly activity
 - Use of insecticides, fly traps, and electric fly killers for effective eradication
- **Prevention Tips:**
 - Keep windows and doors closed, installing flyscreens where necessary
 - Store food in tightly sealed containers to eliminate food sources
 - Avoid leaving liquids in sinks or buckets
 - Remove stagnant water sources, a common breeding ground for flies
 - Promptly clear all food and liquid spillages
 - Ensure waste containers have tightly sealed lids
 - Regularly clean up dead flies to prevent further infestation
 - Keep drains clean and free of debris to reduce breeding sites
- **Time to Effectiveness:**
 - Depending on the severity, full eradication may take from a few days to weeks
- **Ethical & Legal Compliance:**
 - All treatments are conducted in accordance

Birds

For businesses, birds can often become more than just an outdoor spectacle; they can be a significant nuisance. Birds like pigeons and seagulls frequently find buildings to be an ideal location for their activities, offering them a vantage point to food sources and a safe area for nesting. These activities can impact businesses negatively in multiple ways.

- **Commercial & Residential Risks:**
 - Spreading diseases such as salmonella or bird flu
 - Damage to property and goods, especially external structures
 - Slip risks and unsightly mess caused by droppings
 - Noise and disruption affecting business operations and customer experience
 - Secondary pest infestations, such as mites or fleas, introduced by the birds
 - Tarnishing of brand image and reputation
- **Detection & Treatment:**
 - Thorough inspections of common nesting or roosting sites
 - Humane deterrents and exclusion methods like netting and spikes
- **Prevention Tips:**
 - Install a chimney cap of appropriate size to deter birds and secondary pests
 - Keep compost in a sealed area away from business premises
 - Secure all outside bin lids and avoid leaving rubbish bags exposed
 - Keep doors closed when not in use to prevent bird entry
- **Time to Effectiveness:**
 - Most treatments, like netting, offer immediate relief, though it may take time to see a complete absence of nuisance birds
- **Ethical & Legal Compliance:**
 - All methods employed adhere to local wildlife laws, ensuring ethical treatment of birds



Woodworm

Woodworms are wood-boring insects that can cause significant damage to wooden structures and furniture. Often, the presence of woodworm is not detected until visible signs of damage appear, making early identification crucial. An untreated woodworm infestation can lead to structural failures in buildings and irreversible damage to furniture, significantly reducing the strength of the affected wood over time.

- **Commercial & Residential Risks:**
 - Structural failure of timbers
 - Damage to furniture and other wooden items
 - Gradual weakening of affected wood structures over several years
- **Detection & Treatment:**
 - Look for signs such as fresh exit holes in timber, frass (powdery refuse), and weakened wood structures
 - Application of specialized insecticides and preventive treatments
- **Prevention Tips:**
 - Keep premises well-heated and ensure proper ventilation
 - Remove affected wood to prevent the problem from spreading
 - Install insect traps in well-ventilated areas during the summer months
- **Time to Effectiveness:**
 - Early treatment can prevent long-term structural damage, but full eradication can take time



Mites

Stored product insects (SPI), like mites, can wreak havoc in both commercial and residential spaces. Not only do they contaminate food and goods, but they can also cause damage to machinery and lead to regulatory issues. This poses a significant risk, especially in food processing industries.

- **Commercial & Residential Risks:**

- Contamination of food and finished goods
- Damage to processing machinery
- Increased grain warming, which can exacerbate infestations
- Non-compliance with food safety and other regulations
- Damage to brand reputation and loss of income

- **Detection & Treatment:**

- Visible presence of mites, unusual grain warming, or machinery malfunctions
- Treatment often involves the use of specialized insecticides and thorough cleaning

- **Prevention Tips:**

- Inspect all incoming raw materials for signs of infestation
- Implement effective stock rotation to reduce the risk of infestation
- Regularly clean under machinery and on surfaces to eliminate food residues
- Keep dust accumulation to a minimum
- Maintain storage facilities at 16°C or below and relative humidity at 30% or less, if possible
- Store stock and food off the floor and away from walls to reduce hiding spots
- Use robust packaging for raw materials
- Install tight-fitting insect screens or screen doors
- Enforce a strict policy for sealed bagging of all waste



Wildlife Management

Foxes can pose problems when they encroach on human territories, potentially causing various issues that range from property damage to risks of disease transmission. These intelligent and opportunistic creatures may be charming to some, but their presence in residential or commercial areas can be problematic.

- **Commercial & Residential Risks:**

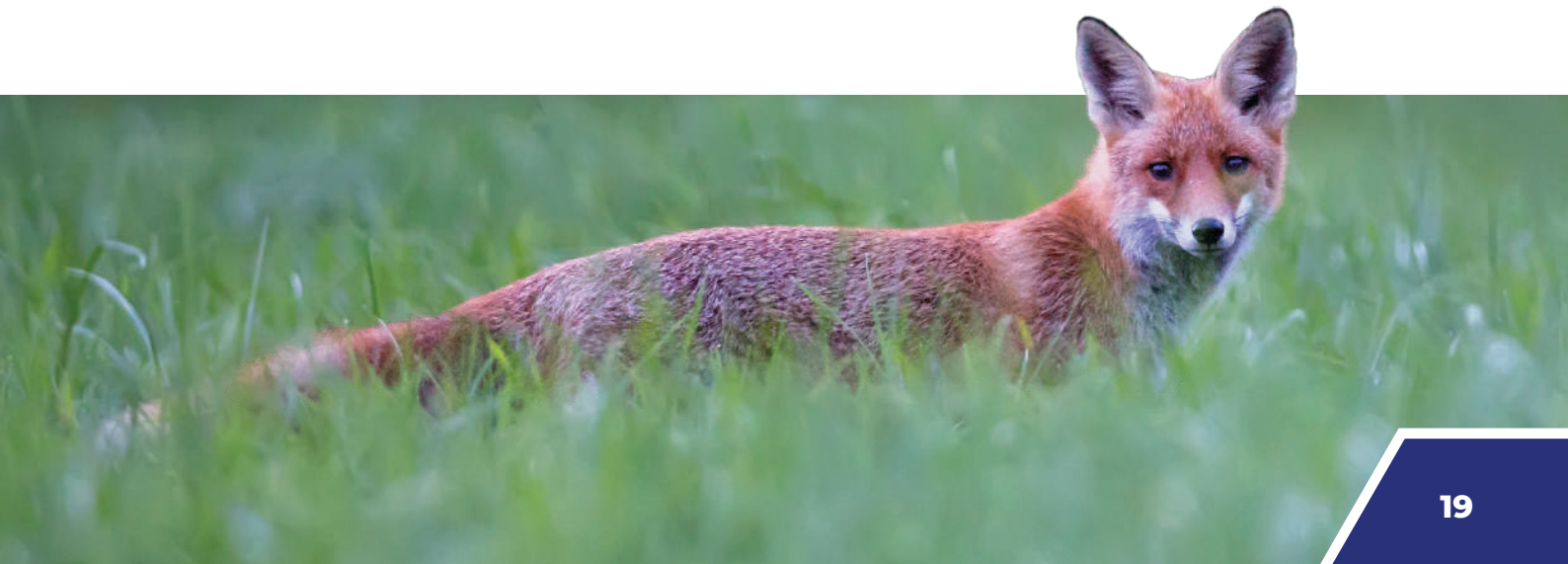
- Damage to lawns and gardens due to digging
- Risk of disease transmission to humans and pets
- Scavenging behavior can lead to littering and property defacement
- Preying on small domestic animals and livestock
- Nuisance and noise, especially during mating season

- **Detection & Treatment:**

- Fox tracks, droppings, and dug-up areas are common signs
- Treatment may include humane trapping, fencing, or using repellents

- **Prevention Tips:**

- Install fencing that extends below ground to deter digging
- Secure garbage cans and compost bins with tight-fitting lids
- Remove food sources, such as pet food left outside
- Use repellents or deterrents specifically designed for foxes
- Regularly check for and repair potential denning sites, like under sheds or decks



Legislation and Auditing in Commercial Pest Control Contracts: A Focus on Pest Pros' Compliance

Navigating the complex landscape of laws and regulations in pest control is imperative for ensuring public safety, ecological balance, and brand integrity. Pest Pros, a committed player in the industry, adheres strictly to various local and international laws, as well as audit standards. Below is an overview of key legislations and auditing practices that Pest Pros follows to ensure full compliance.

Key Legislations

- **Safety, Health and Welfare at Work Act, 2005:** Ensures the health, safety, and welfare of employees, customers, and the public. Pest Pros aligns its operations to ensure the safety and well-being of all involved parties.
- **Chemical Agents Regulations:** Requires organisations to prevent exposing employees and others to harmful substances. Pest Pros uses only approved chemicals and ensures that they are handled and applied by trained professionals.
- **The National and EU Food Safety Laws:** Mandates protection of food from pest contamination through proper design, maintenance, cleaning, and pest prevention. Pest Pros offers specialized services for food storage and processing facilities to ensure they meet these requirements.
- **Biocidal Products Directive:** Regulates the types of biocides and preparations that can be used. Pest Pros ensures it uses only approved biocidal products in its treatments.
- **Irish Wildlife Act:** Regulates pest control methods, especially those that involve mammals and birds. Pest Pros adopts ethical and legally-compliant methods for the control of wildlife pests.

Auditing Standards

Pest Pros is knowledgeable in various auditing standards and can assist businesses in complying with them. Understanding the need for thorough documentation and record-keeping, Pest Pros provides detailed reports that can be instrumental during audits.

By following these laws and regulations meticulously, Pest Pros not only assures the highest level of service but also aids its clients in staying compliant.

