



Watt Footprint



Paul Mahon

CEO & Co-Founder | Watt Footprint



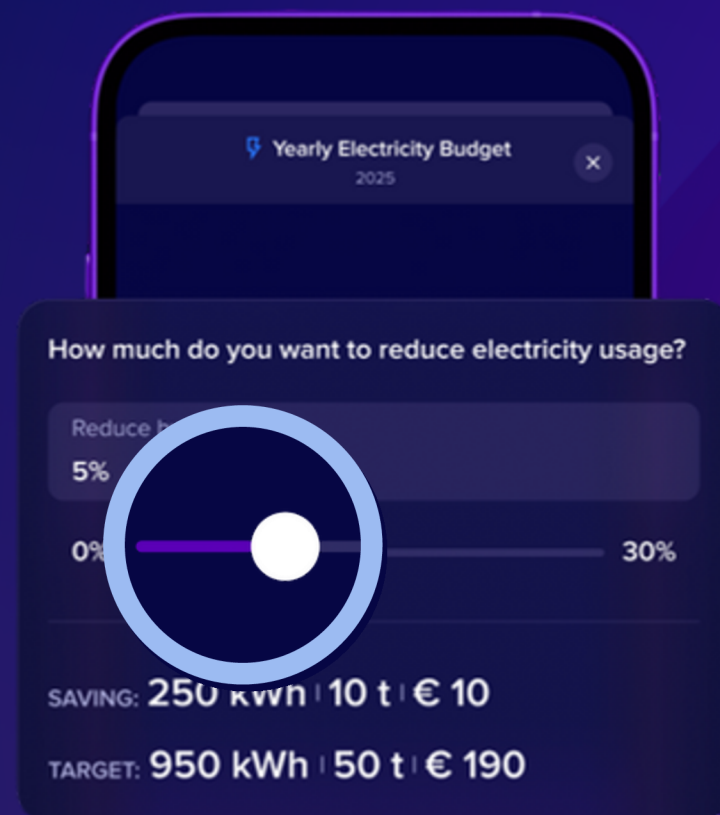
Watt Footprint

One **holistic view**
of your energy
usage and
spending.





Watt Footprint



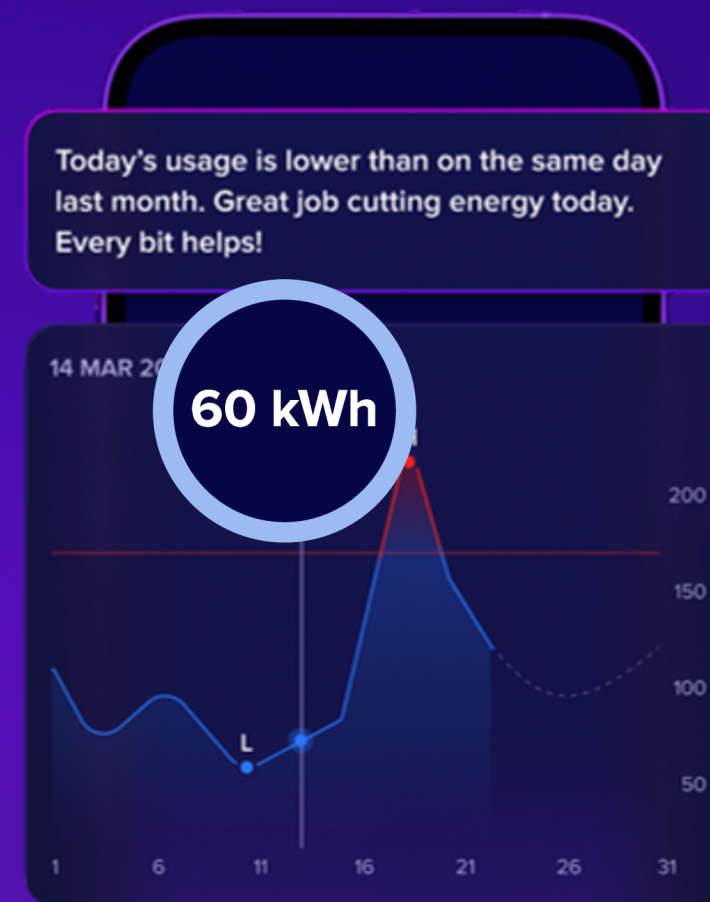
Spending Alerts

Save up to 30% annually with energy spending alerts and monthly budgets



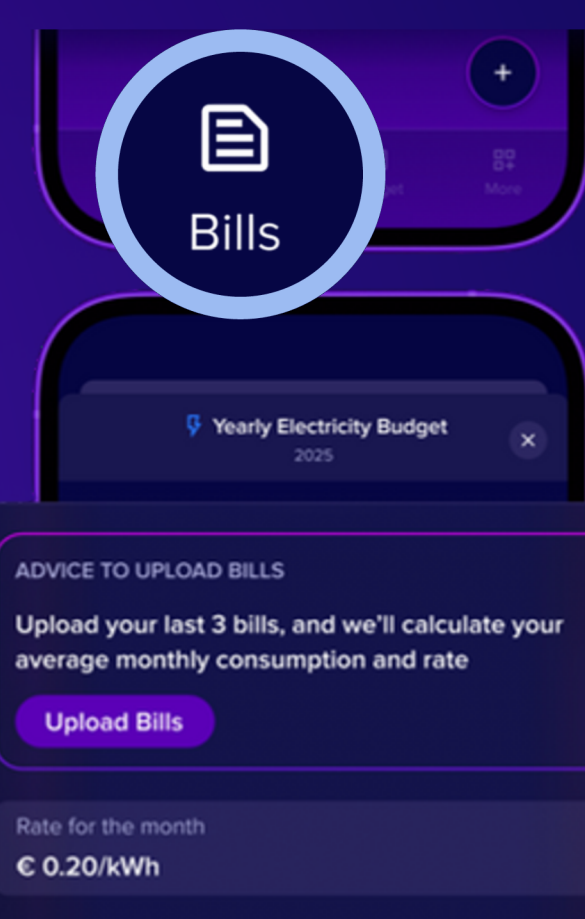
Energy Dashboard

Insights at any time of the day, with live energy tracking on the Energy Pro Subscription model



AI Forecasting

See the future with AI forecasting based on current and past energy usage. Get predictions on overspending and lower rate energy periods



Upload Bills

Upload your last 3 bills, or manually enter your monthly spending, to get a breakdown on why your bill is the price it is- and how to reduce it

An aerial, high-angle photograph of a city at night, viewed through a semi-transparent blue filter. The city lights are visible, particularly in the lower right quadrant where a cluster of buildings is brightly lit. The overall tone is dark and professional.

Energy Experts, so you don't have to be.

Our **Watt Watchers** monitor your energy 24/7.





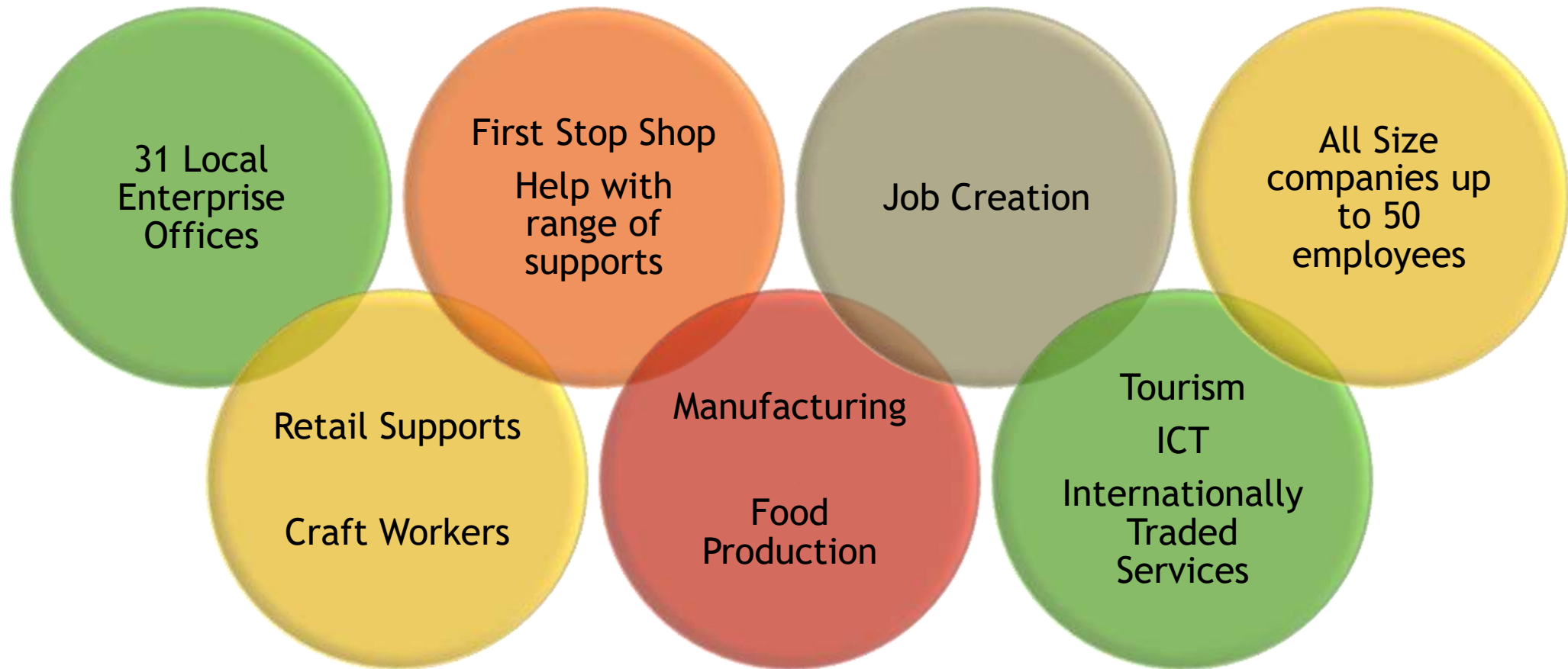
MAKING IT HAPPEN

Isabelle Mooney, Export Business Advisor

LEO Westmeath



Supporting Local Enterprise Development



How the Local Enterprise Supports Businesses



Financial
Supports



Training



Mentoring



Consultancy



Sign Posting



R&D Funding



Networking
Events

The Purpose of The Supports are geared around Strategic Focus Areas



Energy Supports



Green for Business
Programme

Energy Saving
Recommendations
& Report
Compilation

Energy Efficiency
Grant

Green for Business Programme

Free Consultancy Programme to assess energy consumption on business premises.

What's Involved:

- Contact your LEO to complete an application
- Business Paired with An Energy Consultant
- 1 On-Site visit
- Report Completed with recommendations from Energy Consultant



Energy Efficiency Grant

Completed
Green for
Business
Programme
OR SEAI Audit

Contact your
LEO to
Complete
Application

Purchase
Equipment in
Full & Claim
Grant

Energy Efficiency Grant

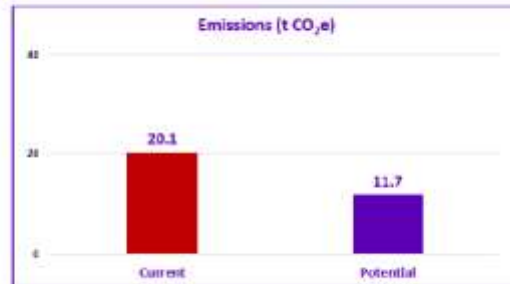
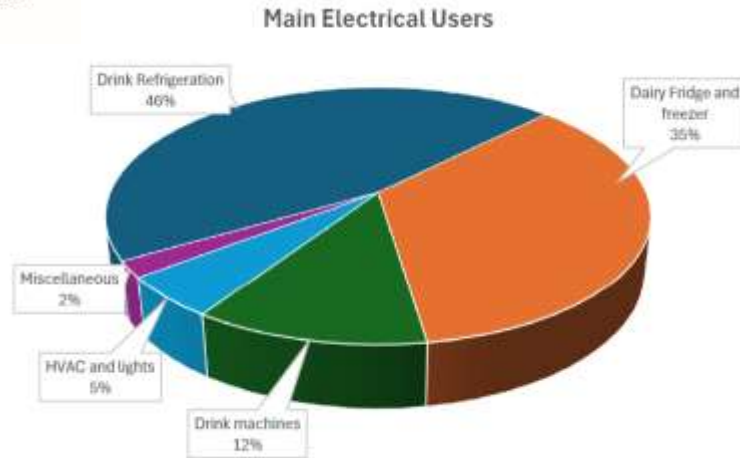
75% Funding up to a Maximum of €10,000

Eligible Businesses can avail of up to a maximum of €10,000 over the lifetime of the business.

Any businesses trading at least 6 months, in a rateable premises employing up to 50 employees

Please Contact Your LEO to determine Eligibility





Case Study:

Retail Space

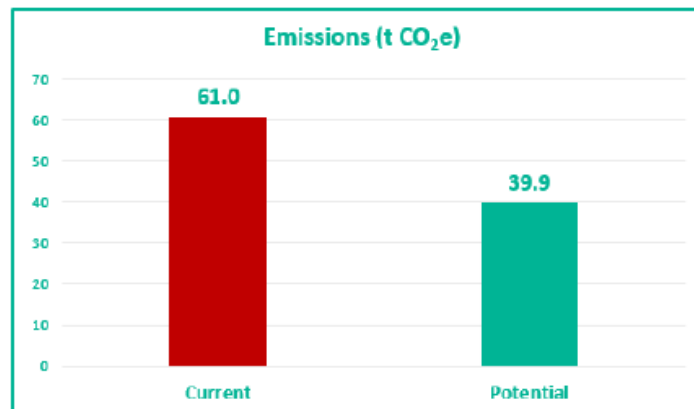
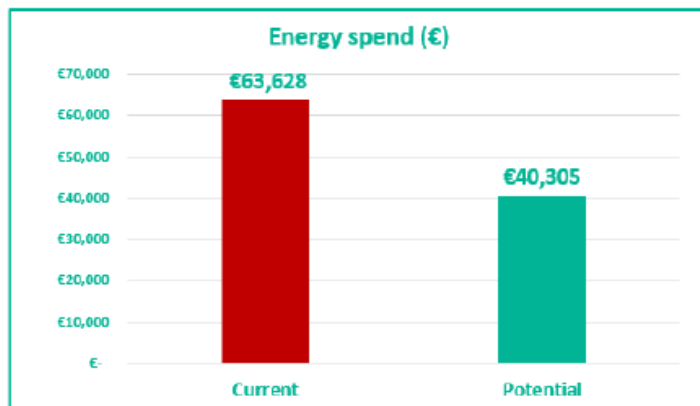
Equipment Replacement:

- Dairy Cabinet Wall
- New Refrigeration Units
- Installation Costs Covered

Total Cost: €16,500
Energy Efficiency Grant
Reimbursement: €10,000

Case Study: Hospitality Sector

Compare your organisation's current and potential energy costs, before and after implementing the recommended actions identified below:



Recommended actions below will help reduce your organisation's emissions by 35% and annual energy spend by €23,323

Eligible Equipment Replacement:

- Kitchen Equipment (Various)
- Heated Gantry

Total Expenditure: €14300
Grant Reimbursement: €10,000

Manufacturing Sector

- Eligible Equipment includes any equipment >5 years old that is essential in the operations of the business
- LED Lighting / Motion Sensors / Energy Monitoring Systems
- Heat Pumps, Heat recovery units, ventilation systems etc.

Thank You

Please contact us via details below:

- ▶ Phone: 044 9338945
- ▶ Email: localenterprise@westmeathcoco.ie
- ▶ Website:
<https://www.localenterprise.ie/Westmeath/>

SEAI Business Supports

Steps to a Low Carbon Business



Kathleen Moore | Business Supports Programme Executive | SEAI
9th September 2025

We work with Government, homeowners, business and communities to create a cleaner energy future



Steps to a Low Carbon Business

UNDERSTAND

Get to know how you use energy and create and action plan.



ASSESS

Complete your energy audit to identify actions.



INVEST

Invest in energy efficiency measures and renewables.



1. Energy Academy

2. Introduction to Energy Management Training

3. Guides, Case Studies

1. Energy Audit Voucher

2. Design Assistance (part of Rapid Approval Grants or Tailored Supports)

3. Smart Energy (Build Better Habits using your smart meter)

• SEAI Business Grants:

a. Rapid Approval Grants

a. Tailored Supports

Case Study to Start



Shannon Springs Upgrade Case Study

- Shannon Springs Hotel, Co. Clare is a 71-bedroom, 4-star hotel
- Undertook a comprehensive retrofit project
 - Swapped oil boilers for air-to-water heat pumps,
 - Installing split AC units to replace electric heating,
 - Installing Solar PV,
 - Energy metering,
 - New pumps
- **Annual savings** achieved:
 - €35,296 *
 - 128 tCO₂
 - 510,100 kWh

**Cost savings correct at time of grant application and calculated at market energy rates.*



EASY WINS
FOR LOWER ENERGY BILLS

SEAI BUSINESS SUPPORTS
SAVED ME

€35,296

John Gavin, Co-Owner, Shannon Springs Hotel

seai SUSTAINABLE ENERGY AUTHORITY OF IRELAND

Rialtas na hÉireann Government of Ireland

Search: SEAI EASY WINS

Cost savings correct at time of grant application and calculated at market energy rates

Step 1: Understand

*Understand your Energy Use and
Create and Energy Action Plan*



1. Energy Academy



"Learners of all ages and industries find the interface and varied available short courses engaging. Regardless of whether anyone is looking to improve their personal or workplace energy use, the Energy Academy will prove an asset."

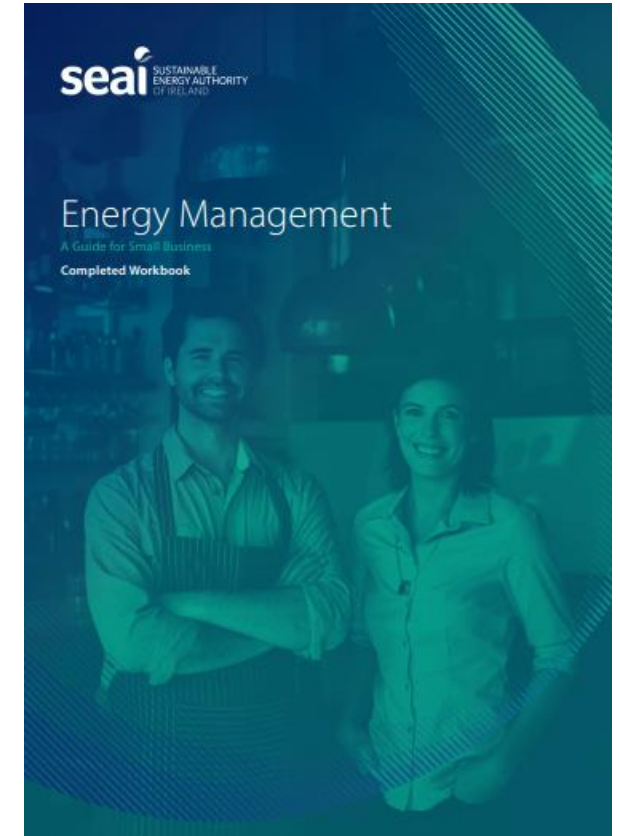
- Over 11,500 learners are using our free e-learning platform <https://www.seai.ie/energyacademy/> to understand their energy use
 1. Increases motivation and confidence to reduce energy use in the workplace
 2. Helps deliver cost savings
 3. Reduces energy waste
 4. Improve your brand image with certs of completion

Sample Modules

- Energy and Climate Change
- Business Energy Efficiency
- Office Energy Efficiency
- Lighting Efficiency
- Renewable Heat
- Introduction to Electric Vehicles
- Introduction to Solar PV

2. Introduction to Energy Management Training

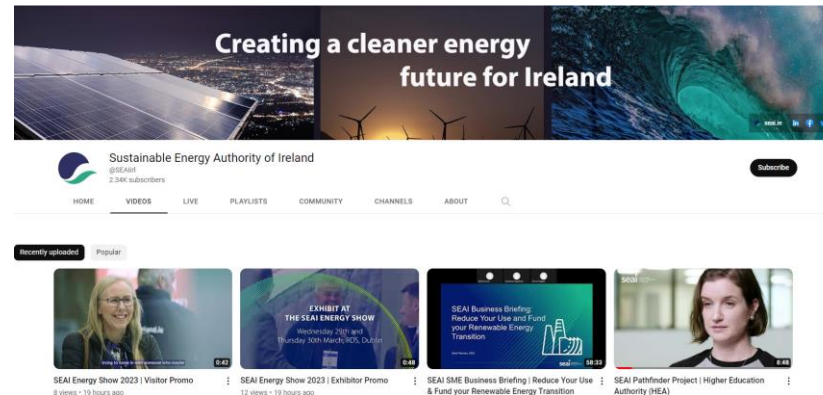
- **Introduction to Energy Management Training:** a free 2 hour training session to help you create an Energy Action Plan for your business.
- Takes you through the six steps to creating an energy action plan
 1. Create the business case for energy management
 2. Assign an energy coordinator
 3. Write your energy statement
 4. Track your energy consumption through bills and meter readings
 5. Identify potential areas to save energy
 6. Create your energy action plan
- Regular workshops: Check out [Ticket Tailor](#) for the next online workshop.



3. Online Guides & Case Studies

Manufacturing and Equipment Tips

1. Check for and activate **eco-mode** on equipment so that anything that's idle after 10 minutes goes into standby mode and using a blank screensaver.
2. Ensure any **motor** in use is the right size for the job they are to perform. Large motors operating small loads are inefficient. When a motor is sized appropriately and operating at or near its power rating it will be more energy efficient. Consider also retrofitting your motors with variable speed drives.
3. Undertake a comprehensive survey for leaks or hotspots in any air, steam, or hot water systems. Fix and damage or gaps in pipe insulation
4. Ensure that heavy energy using equipment has routine maintenance carried out in line with manufacturers guidelines.
5. Employ energy monitoring and an energy management system to ensure you understand and **optimise** energy use



Energy Efficiency Guide For Retailers

Your guide to strengthening your business, saving money, and enhancing your brand through energy efficiency.



Sales Sense

SalesSense enrolled 71 staff members in SEAI's Energy Academy this year. The Academy provided a great opportunity to educate their employees on energy use and energy efficiency in Ireland.



The Monasterboice Inn

The Monasterboice Inn completes a major energy efficient renovation project using the EXCEED programme.



Terra Spirits & Liqueurs

Learn about Terra Spirits & Liqueurs, a family run SME in Co Monaghan, programme of sustainability and energy management.

Step 2: Assess

Complete an Energy Audit



1. Support Scheme for Energy Audits (SSEA)

- Offers SMEs a voucher of €2,000 to get a high-quality energy audit with an SEAI Registered Energy Auditor.
- An Energy Audit Report:
 - Analysis of your business energy use.
 - Identifies the equipment and processes that use the most energy.
 - Recommends actions you should take to save energy, and their estimated cost and impact, as well as first step.
- To be eligible, your company must:
 - Be a Small or Medium Enterprise
 - < 250 employees
 - Turnover < €50M or balance sheet < €43M
 - Spend at least €10,000 on energy per year (electricity/heat)
 - Be tax compliant
- Find out more and apply online: www.seai.ie/sme/energyaudits

Step 3: Invest

*Invest in Energy Efficiency and
Renewables*



A. Rapid Approval Grants



Business Energy Upgrade Scheme



- Grant amount based on Business Type and Area of Building and Tech Details or Specific Details of New System.
- Grant support up to 30%
- Up to 50% for Design Assistance and BMS optimisation

Measure	Grant Value
BMS Optimisation	€2,000
Design Assistance	up to €25,000
Pumps	up to €10,000
Air Handling Unit Upgrades	up to €25,000
Solar Thermal	up to €15,000
Automatic Controls	up to €30,000
Heat Pumps	up to €100,000
Fabric	up to €120,000

Visit - [Business Energy Upgrade Grants](#)

Non-Domestic Microgen Scheme (Solar PV)

- Installation of Solar PV.
- Grant up to €162,000.
- Approval is immediate.
- Size under scheme set at a maximum 1000kWp (Approx 2,500 Panels).
- No BER required and available to all pre-2021 buildings.
- Clean Export Guarantee (CEG) tariff, for any exported electricity (subject to supplier rates).

Solar PV System Size	Grant Value
1kWp*	€900
2kWp	€1,800
3kWp	€2,100
4kWp	€2,400
5kWp	€2,400
6kWp	€2,400
7kWp – 20kWp	€300/kWp
21kWp – 200kWp	€200/kWp
201kWp – 1000kWp (1MWp)	€150/kWp



General Scheme Terms & Conditions

Eligibility criteria –

- Must be the business premises owner, or in the case of public sector, the responsible person.
 - Applicant makes the application.
 - Year of construction, pre 2021 i.e., built & occupied on or before Dec 31st, 2020.
-
- Grant amounts are fixed.
 - Grant approval must be in place prior to works commencing.
 - One grant per MPRN
 - Companies are not permitted to submit applications on behalf of applicants
 - Works must comply with the NDMG T&Cs incl. NDMG Technical Standards & Specifications Document, otherwise the applicant may have their grant declined, or rescinded.
 - Products installed must comply with certification and performance criteria set out in the Code of Practice (CoP)

B. Tailored Supports



Support Scheme for Renewable Heat (SSRH)

What is it?	Who is it for?	Level of Support
<p>Financial support to replace fossil fuel heating systems with heat pumps or biomass / biogas alternatives.</p> <p>1. Investment aid (Heat pumps) – up to 40% of eligible costs for:</p> <ul style="list-style-type: none">• Air source heat pumps• Ground source heat pumps• Water source heat pumps <p>2. Ongoing operational aid (through tariff payment for eligible heat use) for;</p> <ul style="list-style-type: none">• Biomass boilers• Biogas boilers (AD)• Biomass or biogas HE CHP	<p>Ideal for</p> <ul style="list-style-type: none">- Switching away from fossil fuel for heating- Renewable heat led building retrofit- Industrial heat decarbonisation	<p>Grant for heat pumps: Up to 40% and €1 million</p> <p>Tariff for biomass/biogas: Up to €3.5 million over 15 years</p>

[t-](#)

Community Energy Grant

Assisting energy efficiency community projects through capital funding, partnerships, and technical support.

- Community oriented with a cross-sectoral approach.
- Managed by a Project Coordinator (list on our website).
- Suitable for projects from €50k to €1.5m.
- Grants for Businesses are typically 30%.
- Suitable for investment in multiple measures.
- Visit [Grants For Sustainable Community Projects | SEAI](#)



Excellence in Energy Efficient Design (EXEED)

- SEAI EXEED (Excellence in Energy Efficient Design) is a certification program that **helps businesses achieve optimum energy performance**.
- It applies a **standardised approach** to project design and implementation for new or upgraded buildings and processes.
- Grant support of up to **€3,000,000** per project available.
- Open **year-round** for applications by businesses and public sector organisations.

Who is it for?



Brand new buildings and facilities



Upgrades or re-purposing of existing buildings and facilities



Manufacturing processes

Electric Vehicle Supports

SEAI Grants



€3,800 for Commercial purchase of **Vans (N1)**

€7,600 for Commercial purchase of 3.5T Large Panel Vans (**N1**)

€8000 for an SEAI EV Fleet Assessment (NEW)

- ideal for businesses exploring whether or not to electrify their fleet

+ VRT Relief



€200 for N1 vehicles

Low VRT rates on passenger cars (7%) and relief for vehicles below €50k

+ Benefit in Kind reduction



Pay €0 on the first €45k, reducing on a sliding scale to 2027 (included)

+ Lowest motor tax



Tax of €120, calculated based on emissions levels



Additional Supports



Large Industry Energy Network (LIEN)

- SEAI's LIEN provides advice and mentoring support for large industry to improve their energy efficiency, save money and decarbonise.
- LIEN provides:
 - free impartial, expert energy management mentorship via relationship managers
 - access to industry briefings, sectoral special working groups, workshops, best practice guidance and case studies
 - support with monitoring and reporting of energy and emissions data
 - support with attaining and maintaining ISO 50001 certification
- Companies interested in joining can email Business@seai.ie year-round for more information
- Review the membership list and find out more about the network here: <https://www.seai.ie/business-and-public-sector/large-business/lien/>

Accelerated Capital Allowance

- Accelerated Capital Allowance(ACA) is a tax incentive encouraging investment in energy saving technology.
- The ACA scheme allows a sole trader, farmer or company that pays corporation tax in Ireland to deduct the full cost of the equipment from their profits in the year of purchase.
- The reduction in tax paid by the organisation in that year is currently 12.5% of the value of capital expenditure.

Energy Efficiency Obligation Scheme (EEOS)

- Under EEOS, the largest energy companies in Ireland are obligated to achieve energy savings targets every year
- They do this by supporting energy efficiency projects in businesses and homes across the country
- The energy companies offer financial and/or practical supports in exchange for counting the energy savings towards their targets
- The energy companies must be able to demonstrate their involvement in the project before works start
- For more information, visit here: <https://www.seai.ie/business-and-public-sector/business-grants-and-supports/energy-efficiency-obligation-scheme/>

Thank You!

Please contact:

Kathleen.moore@seai.ie





About RVR Energy Technology

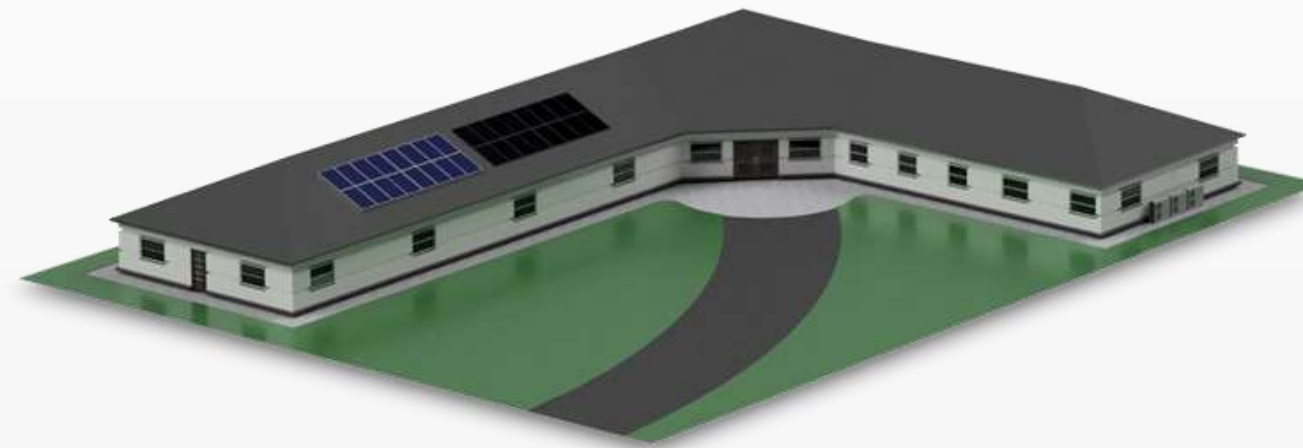
- Established in 1994
- Can trace origins in Ireland to 1978
- High level of technical expertise
- Heating and Energy solutions for the decarbonisation of buildings
- Modern, highly innovative products
- Strong after sales service

Markets today



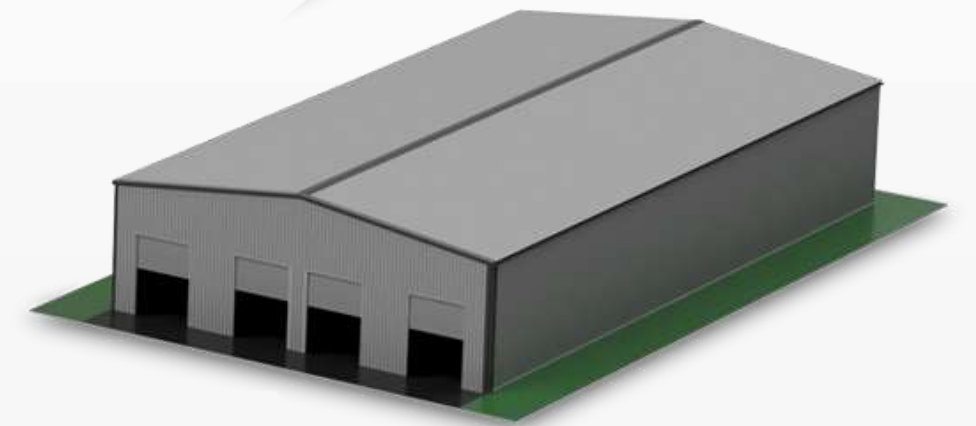
Multi-Unit Housing

- Housing developments
- Heating
- Solar PV



Commercial Buildings

- Hotels
- Nursing Homes
- B&Bs
- Swimming Pools
- Agriculture
- Pubs & Clubs
- Office Complexes
- Heating & Cooling
- Solar PV



Industrial Buildings

- Warehouses
- Factories
- Industrial Units
- Heating
- Solar PV



The Mespil Hotel



Project Scope:

Replace an end-of-life natural gas CHP system with a sustainable, efficient solution that could meet high domestic hot water demands while maintaining guest comfort.

Project Statistics:

260 Guest Rooms

70°C Max Output Temperature

100% CHP System Replacement

Project Drivers:

- Decarbonising space heating and DHW production
- Reducing dependency on fossil fuels
- Optimising efficiency and lowering lifecycle costs
- Ensuring guest comfort and reliability



Mespil Hotel - Solution



Technical Specifications	
Dual Units Installed	2 × Palladium 85.2 heat pumps
Heating Capacity	1.9kW per unit
Refrigerant	R290 (Natural refrigerant, GWP=3)
Max Flow Temperature	70°C
Integration	BACnet BMS compatibility

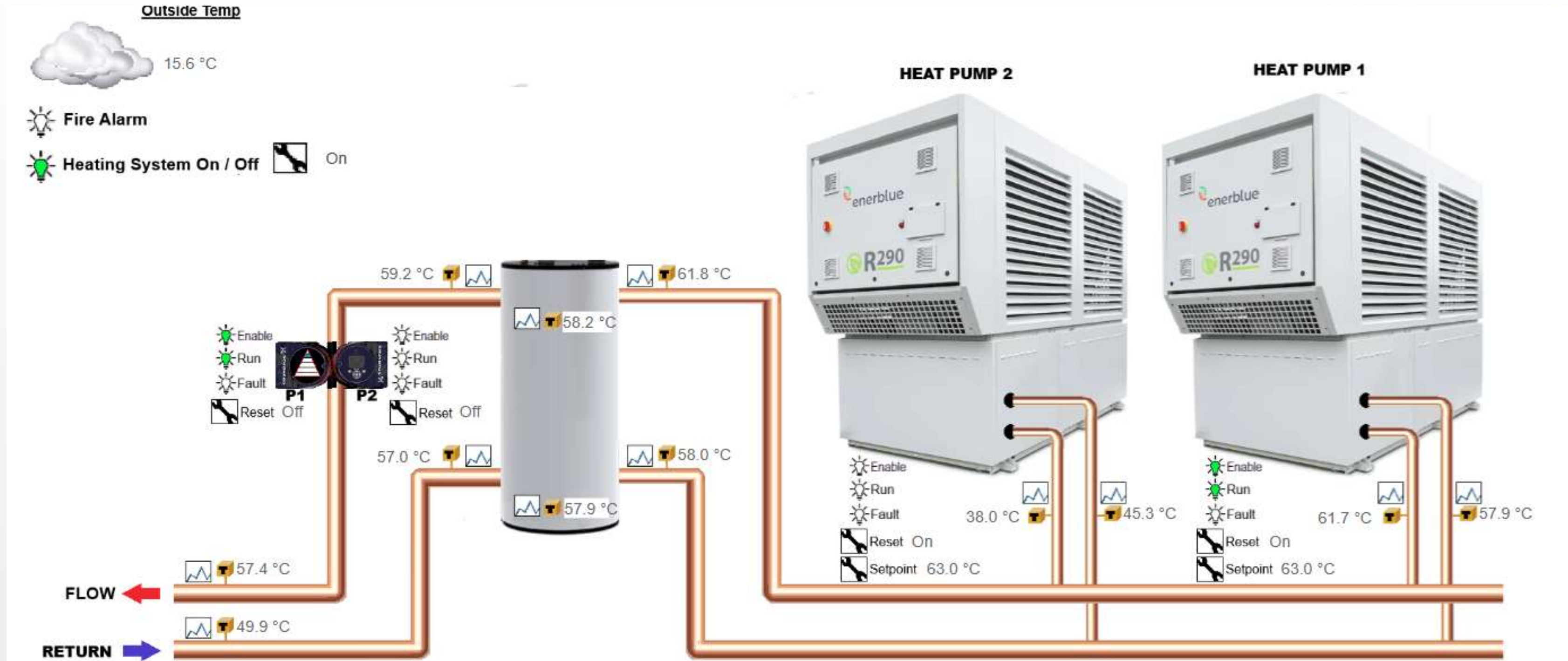
**Supported by SEAI Better
Energy Communities (BEC)
scheme**



Key Features:

- Direct DHW production, no backup needed
- Legionella prevention compliant
- Future-proofed for F-Gas restrictions
- Smart digital integration
- Built for continuous commercial use

Mespil Hotel – Smart Integration & Controls



Mespil Hotel – Smart Integration & Controls



Features:

- **Sequential Heat Pump Control** - Optimal load matching for efficiency
- **Weather Compensation** - Automatic flow temperature adjustment for seasonal efficiency
- **Time Scheduling** - Coordinated space heating and DHW production
- **BACnet Digital Integration** - Enhanced monitoring and management
- **Automated DHW Temperature Control** - Eliminates Legionella risk
- **Seamless Installation** - Minimal operational disruption during replacement

Installation Approach:

- **Coordinated by Thermodial with careful planning**
- **Phased delivery to maintain hotel operations**
- **Continuity of hot water supply maintained throughout**
- **Integration with existing plantroom infrastructure**

Mespil Hotel - Results



Operational Benefits:

- **Optimized seasonal efficiency** with weather-compensated controls
- **Reliable DHW supply** meeting all hygiene standards
- **Reduced operational complexity** through simplified plant design
- **Lower maintenance requirements** compared to legacy CHP system
- **Enhanced system monitoring** via BACnet BMS integration
- **Improved energy cost predictability**

Environmental Impact:

- **Zero Gas Dependency** - Complete elimination of natural gas CHP system
- **Significant CO₂ Emission Reductions** - Substantial carbon footprint improvement
- **Future-Proofed Technology** - Natural refrigerant compliance with regulations





Castlerosse Park Resort, Killarney



Project Scope:

Comprehensive energy transformation replacing LPG heating with cutting-edge hybrid system combining heat pumps and solar PV technology.

Project Statistics:

230kW High Temperature Heat Pump System

65°C Heat Pump Output Temperature

115 kWp Solar PV System

2,000L Buffer Tank Capacity

Project Drivers:

- Replace aging LPG boilers for leisure center and bedroom block
- Reduce reliance on fossil fuels
- Offset increased electricity demand from heat pumps
- Maintain luxury guest experience standards



Castlerosse Park Resort, Killarney



Technical Specifications

Operating Range	Down to -20°C external temperature
SCOP Efficiency	Up to 5.0
Output Temperature	Up to 65°C
Buffer Tank	2,000L capacity for peak demand and defrosting
Backup System	Immergas Victrix Pro 120 condensing boilers

Supported by SEAI
Better Energy
Communities
(BEC) scheme

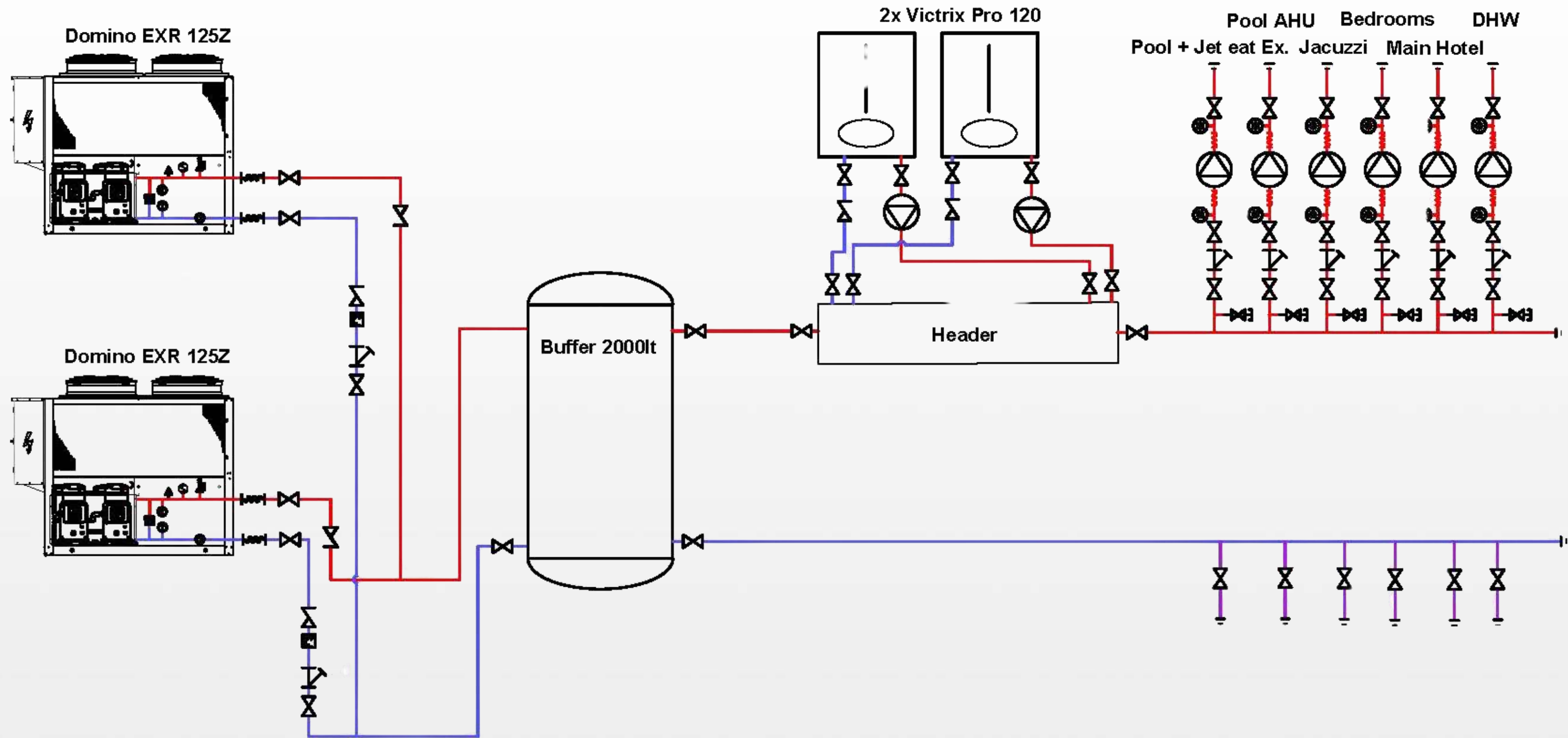


Advanced Features:

- **Inverter Technology** - Precise temperature control
- **Digital Defrost System** - Reliable operation in cold climates
- **Liquid Injection Scroll Compressor** - Improved efficiency and performance
- **Weather-Compensated Controls** - Automated equipment management
- **Microprocessor Control** - Optimal performance and energy savings

Ideal for hotels,
office buildings,
hospitals, schools,
and sports
facilities

Castlerosse – Hybrid Heating System



Castlerosse – Hybrid Heating System



6°
WATER
TEMPERATURE
5

-°
EXTERNAL
TEMPERATURE
20





Thank You